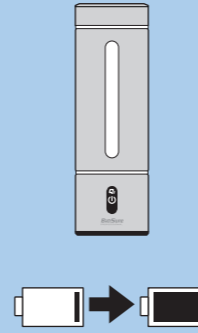


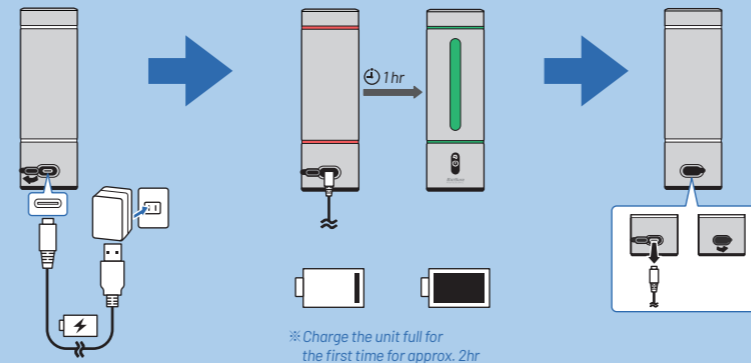
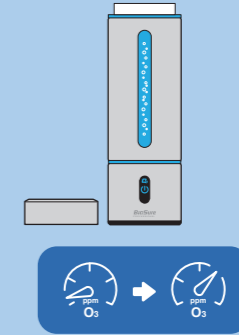


1

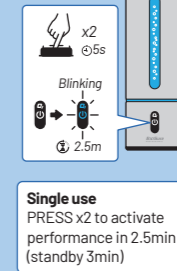


QUICK START GUIDE

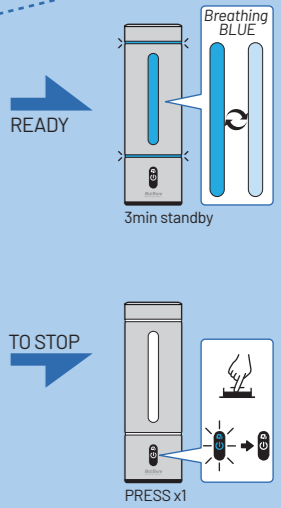
2



※ Charge the unit full for the first time for approx. 2hr



Single use
PRESS x2 to activate
performance in 2.5min
(standby 3min)



LIMITED WARRANTY

BioSure Professional is a division of Biotek Environmental Science Ltd. ("BES"). BES warranties new equipment manufactured in BES's designated facilities to be free of defects due to poor materials or workmanship for the period of time listed below (following the date of original installation or purchase):

- 1 Year Parts Only Replacement (excluding battery)
- Lithium Polymer Battery - 6 months

Exclusions: Certain BES parts that are expendable by nature and that need to be replaced frequently may not be covered. BES is not liable under these warranties for repairs or damages due to improper operation, attempted repairs or installation by unauthorized persons, alterations, abuse, fire, flood, or acts of nature. Additionally, this warranty may be voided in the case of:

- Failure to follow BES (and BioSure Professional) instructions for use, care, or maintenance
- Removal, alteration, or defacing of the BES-affixed serial number and other labels
- Mechanical damage
- Use of fluids other than clean, potable water

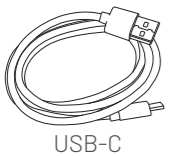
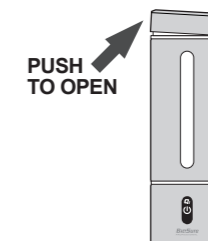
This warranty is conditional upon BES receiving notice of any defect subject to this warranty within thirty (30) days of its original discovery by the Buyer. For service or warranty questions, contact the BES service department or BES authorized dealer nearby.

ATTENTION

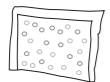
- Do NOT use a power supply voltage other than being specified on the product.
- Do NOT plug or unplug the Power Cord if your hands are wet.
- BioSure Professional Oral Rinse Tumbler is not a toy. Supervision is required when children present.
- Do NOT drink ozonated water. Ozonated water is for sanitation use, NOT for drinking.
- Dispose of properly.

This device is designed to generate ozone electrochemically in clean water, with the amount of ozone well below typical safety limits and regulations when used correctly. Ozone can be sensed by smell at a level as low as 0.02ppm. It is normal and expected to be able to detect a mild ozone smell from the open bottle mouth. However, ozone can be irritant if inhaled in instant large quantities. For safety, do NOT inhale the ozone gas produced by this device directly.

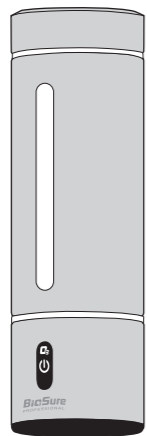
※ How to open the cap:



USB-C



Desiccant bag



Thank you for purchasing BioSure Professional product. Please read this manual carefully and follow the instructions for using this product.

BIOTEK ENVIRONMENTAL SCIENCE LTD.
www.besgroups.com

BioSure

PROFESSIONAL

O₃ral Rinse Tumbler
EOS7160-P

INSTRUCTIONS & REFERENCE GUIDE

CAUTION

- To reduce the risk of fire, do not expose the appliance to naked flame sources (for example, lighted candles).
- Do not expose the batteries (batteries installed) to excessive heat such as sunshine, fire or the like for a long time.
- Do not dismantle, open or shred batteries.
- In the event of a cell leaking, do not allow the liquid to come in contact with the skin or eyes. If contact has been made, wash the affected area with copious amounts of water and seek medical advice.
- Batteries need to be charged before use. Always refer to the manufacturer's instructions or equipment manual for proper charging instructions.
- After extended period of storage, it may be necessary to charge and discharge the cells or batteries several times to obtain maximum performance.



CAUTION ON CHARGING

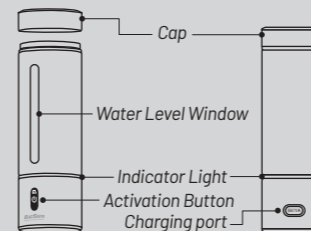


When the USB plug is inserted in a wet condition, a short circuit occurs due to the liquid (tap water) attached to the main unit and charging cable or foreign matter, it may cause abnormal heat generation or malfunction.

Never insert USB plug when the main unit or charging cable is wet condition.

PREPARATION

BE FAMILIAR WITH YOUR NEW O₃ral Rinse Tumbler.



CHARGE

If the spray bottle does not operate when activation button is pressed or a red light is ON after operation. The spray bottle needs to be recharged.

- Find the charging port on the back of the bottle.
- Connect the charging cable (USB-C, included) to the device.
- Connect the charging cable to an adaptor (output: DC 5V/1A) and plug them into a standard outlet.
- A breathing RED LED light indicates charging is taking place.
- Charging is complete when the indicator turns to be steady green.

⚠ It is NOT recommended to charge and operate the unit at the same time.

FILL

- Push to open the cap with a 30-degree angle and remove it.
- Fill the tumbler with cold tap water ONLY.
- Reattach the cap back on to the tumbler.

⚠ Do NOT submerge under water. Do NOT add chemicals or soap. Use tap water ONLY.

※Recommended water quality:

Clean or filtered water, TDS 60-200 ppm, Hardness < 180 ppm as CaCO₃.

USE

SANITIZE

- Generate ozonated water solution in the tumbler.
- Use the ozonated for oral rinse.
- Rinse on object/surface, applicable to surface sanitation as well (e.g., toothbrush, braces, dentures).

CARE

CLEAN

- Rinse the inside of the tumbler with clean water ONLY. (※ NOT dishwasher safe)
- Wipe the bottle surface with a soft cotton, microfiber, or paper textile.
- If the tap water quality in your region is hard, it can cause scaling on the tumbler. If there is scaling, fill the tumbler with warm citric acid solution and then wait for 30 minutes. After descaling, pour out the citric acid solution and wash the tumbler with clean water.

MAINTENANCE

To maintain consistent performance, follow these care instructions.

- Do NOT operate the bottle when it is empty or at low water level, this may damage the ozone generator.
- Clean and empty the bottle at the end of each day.
- Use only attachments and replacement parts sold or recommended by manufacturer.
- Use citric acid for every 3 months or every 4 weeks (depends on usage and water quality).

STORAGE

- Remove the cap and empty water from the tumbler.
- Wait for the tumbler dry, and then reattach the cap.
- Store the tumbler at room temperature, avoid dust.

PRECAUTIONS

ON SAFETY

- Important information such as the model name and product serial number are located on the bottom exterior.

ON PLACEMENT

- Do not set the unit in an inclined position.
- Do not leave the unit in a place subject to high temperature, such as direct sunlight, near a heat source or under lighting equipment.

ON CLEANING

- Do not use detergent nor solvents such as alcohol, benzene, thinner, to clean the surface.
- Do not clean the unit in a dishwasher.

OTHERS

- Do not use or leave the unit in an extremely cold or hot environment (temperature outside the range of 5 - 35°C).
- Even if you do not intend to use the unit for a long time, charge the battery to its full capacity once every 6 months to maintain its performance.

※How to care for the unit when wet:

If the unit gets wet on the surface, wipe off the moisture using a soft, dry clean cloth. Be sure to wipe off excess moisture after filling the unit. After using the unit, drain all the water and leave it at room temperature, dry it until no moisture remains. Do not put the unit in a dish dryer to dry.

※System requirements for charging battery using USB-C:

Using a USB power supply capable of feeding in DC 5V 1A.

SPECIFICATIONS

OZONE TECHNOLOGY

Ozone generator: Built-in parallel plate electrodes electrolytic ozone generator.

Ozonated water concentrations: Up to 2.0ppm.*1
*1 Actual performance concentrations may vary from the listed data due to operating conditions.

WATER

Max. fill capacity: 150ml (5 oz.)
Water temperature: 5 - 35°C (41 - 95°F)

Water quality requirements:
Total Dissolved Solids (TDS) 60 - 200ppm;
Hardness < 180ppm CaCO₃

BATTERY

Battery spec.: Lithium polymer 3.7V 1000mAh
Charging power: DC 5V 1A (using the USB power supply)
Charging time: approx. 60 minutes (first time charge 120min.)
Battery performance time:

Approx. 500hr in idle state; approx. 1.8hr in total for collective operation time (including standby). If the operation is repeated without standby the usage life will be approx. 50min.*2

*2 Actual performance time may vary from the listed time due to usage conditions.

GENERAL

Room temperature: 5 - 40°C (41 - 104°F)
Dimensions :(including the cap): 53mm (2") dia. x 168mm (6.6") [H], approx. 258g (0.57lbs) including battery (empty bottle)

Supplied accessory: USB Type-C cable (1); Tumbler cap (1) [attached to the unit]

Designed by BES in Taiwan. Assembled in China.
Design and specifications are subject to change without notice.

TROUBLESHOOTING

Problem	Possible Cause	Solution
5 sec RED LED ON after operation	Battery low	Recharge
No response after pressing the activation button	Battery empty	Recharge
	Bad battery	Contact service agent
RED LED not ON during recharging	Bad adaptor or loosen connection	Replace adaptor or reconnect the charger
	Bad battery	Contact service agent
Breathing BLUE/RED LED during standby	Ozone Generator near end of life (2%)	Contact service agent
Quick Blinking RED LED during activation ※Function suspended	Ozone Generator life finished	
Shorter operating time	Battery near end of life	Contact service agent
Less ozone performance	Water TDS low	Correct water source
	Generator scaled	Clean bottle with citric acid solution
Blinking RED/GREEN LED during activation ※Function suspended	TDS too high (>200ppm)	Correct water source
	TDS too low (<60ppm)	Correct water source
Blinking RED/BLUE LED during activation ※Function suspended	Generator is heavily scaled	Clean bottle with citric acid solution
	Lack of water	Fill water